



QUICKSTART GUIDE

[WINDOWS]

This guide describes a simple step-by-step sequence to install your InterGate PM software and automatically configure it to provide content and application filtering for all the computers on your network.

The guide assumes basic knowledge of Windows fundamentals, such as operating a user interface and familiarity with standard Internet terminology, such as IP addresses.

Full details and descriptions of InterGate PM's features can be found in the Reference Guide.

CONTACTING VICOMSOFT

UK & International

Address: Vicomsoft Ltd.
Gild House
70 Norwich Avenue West
Bournemouth
Dorset BH2 6AW
UK
Telephone: +44 (0) 1202 757560
Fax : +44 (0) 1202 310241
Website : www.vicomsoft.co.uk
Sales : sales@vicomsoft.co.uk
Support : support@vicomsoft.co.uk

USA & Canada

Address: Vicomsoft Inc.
40 Railroad Avenue
Valley Stream
NY 11580
USA
Sales : 888-842-2608
Fax : 530-685-8896
Website : www.vicomsoft.com
Sales : sales@vicomsoft.com
Support : support@vicomsoft.com

The Vicomsoft software and documentation are copyrighted with all rights reserved. Under the copyright laws, they may not be copied, in whole or in part, without the written consent of Vicomsoft. This exception does not allow copies to be made for others, whether or not sold. Under the law, copying includes translating into another language or format. All third party trademarks are acknowledged.

Changes to Documentation or Software. Vicomsoft reserve the right to revise this Guide and/or the Vicomsoft software and to make any changes without the obligation to notify any person of such changes.

License, Warranty, Limitation of Liability. Details of the software License, Warranty and Limitation of Liability are found in the Legal and Commercial Matters section of the User Guide. Users of Vicomsoft software are specifically referred to these matters.

Microsoft, Windows, and Windows NT are either registered trademarks or trademarks of Microsoft Corporation in the United States and/or other countries.

Apple, the Apple logo, Mac, Mac logo, Macintosh, Power Macintosh and QuickTime of Apple Computer, Inc., registered in the U.S. and other countries

SYSTEM REQUIREMENTS

To use InterGate PM, the computer it is installed on must have access to the Internet, either directly via an account with an Internet Service Provider or as part of your organisation's network configuration. The computer must be able to connect and use the Internet before you install the software.

For content filtering configurations, where the firewall and router features of InterGate PM are not required, two separate Ethernet interfaces are required each of which must be on a separate physical segment.

For firewall configurations, if your Internet service is provided through an Ethernet interface, for example, via a cable modem, xDSL modem or a router we highly recommend a separate Ethernet interface for this connection. We recommend using two cards as this will keep your Local Network physically separated from your Internet connection, offering you the greatest security for your local network.

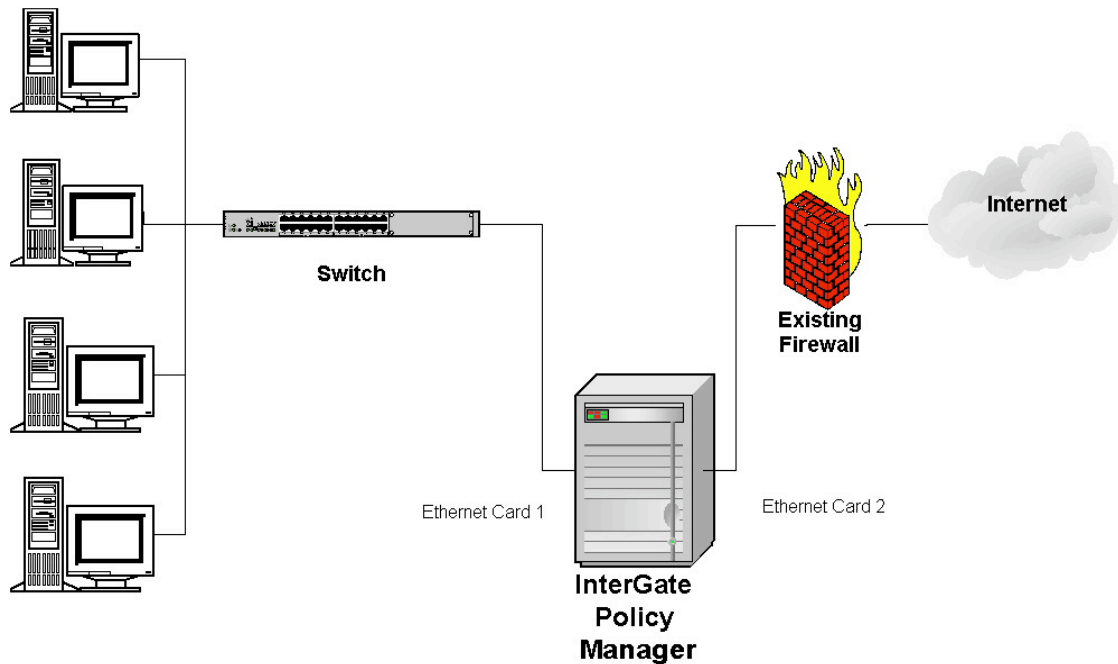
System Requirements

- Microsoft Windows 2000, XP or 2003
- Pentium III 700 MHz Processor or better
- 512Mb of RAM
- At least 100 Mb of available disk space (depending on your logging requirements)
- Working access to the Internet
- Two Ethernet LAN interfaces (bridging mode)
- At least one Ethernet LAN interface connection for the client computers

InterGate PM can be installed in one of two modes. The following page shows two examples of using InterGate PM on your network.

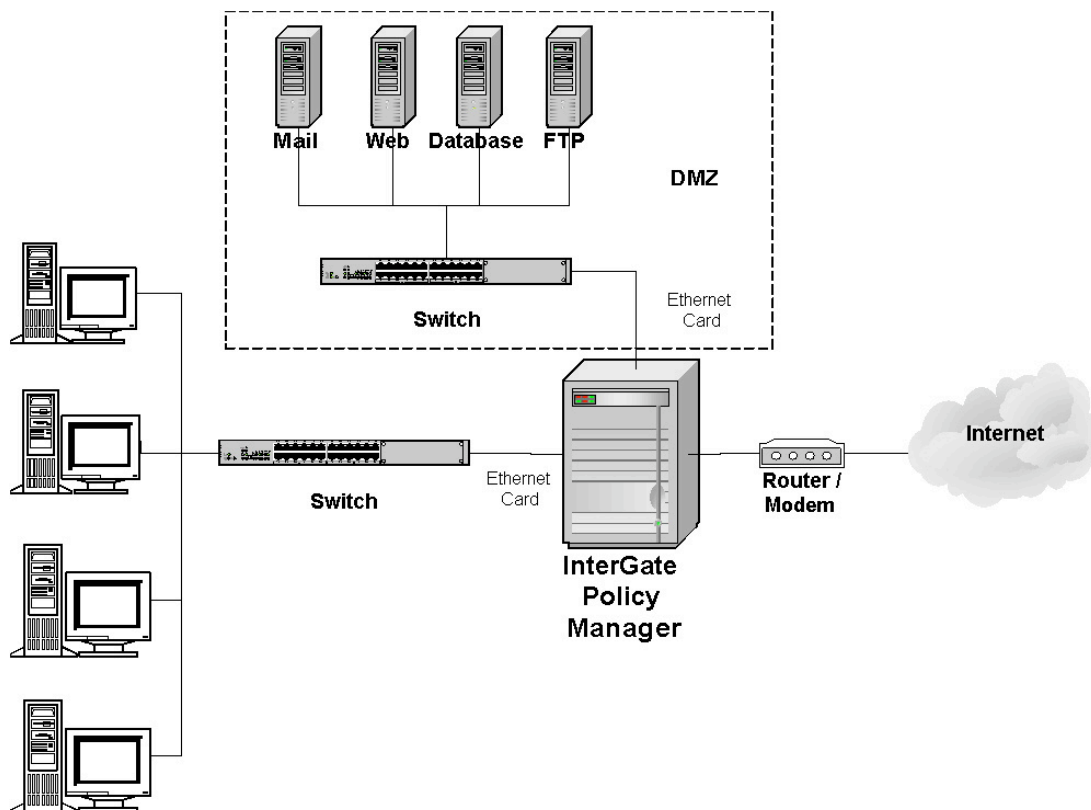
Example Setup 1 – Bridging Mode

The following shows InterGate PM being used for content filtering, logging and reporting where an existing firewall is already in place:



Example Setup 2 – Firewall Mode

The following diagram shows InterGate PM being used as a firewall with content filtering etc. The DMZ is optional and its setup is dealt with in the Reference Guide.



STEP 1

Before You Install

Ensure the machine that will run InterGate PM can connect to and use the Internet. If it cannot do so, obtain assistance from your Internet Service Provider or Network Administrator to get connected. InterGate PM should not be installed until your computer can successfully connect to the Internet. Also ensure your computer meets the minimum system requirements, and that you have the necessary connections and hardware correctly installed and functioning.

STEP 2

Installation

If you have purchased using the Online Delivery System, it is very important that you make a backup of the files you downloaded, the emails you receive and the license file. This is required in case you need to re-install InterGate PM at a later date.

The software is delivered as a ZIP archive, please uncompress that archive into a new folder. After that has been done, double-click on "Intergate.exe" or "IntergateDemo.exe" (depending on which version you have) to start the installation of the software. When installing the demo, you will need to enter the "demo activation" code you have been sent.

You may have to restart your machine after installation. If the Installer asks you to reboot, please do so before trying to use InterGate.

STEP 3

Start InterGate PM

Open "Start" menu, then "Programs", "Vicomsoft" and then select "InterGate". InterGate will open the user interface and launch the Auto Setup program.



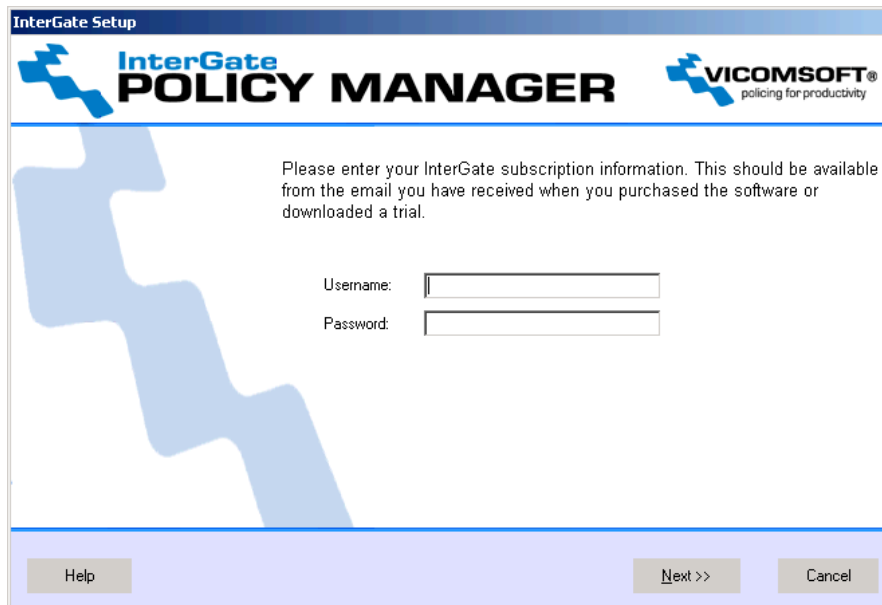
The Auto Setup can also be run manually at any time by selecting "Run Auto Setup" from the "Network" menu when the InterGate PM is switched off via the On/Off button on the main status screen.

Click on "Next" to start the Auto Setup process.

STEP 4

Enter subscription details

The Auto Setup will first ask for your subscription details:



The screenshot shows a software installation window titled "InterGate Setup". The window has a blue header bar with the "InterGate POLICY MANAGER" logo on the left and the "VICOMSOFT® policing for productivity" logo on the right. Below the header, there is a large blue graphic on the left side. The main content area contains the following text: "Please enter your InterGate subscription information. This should be available from the email you have received when you purchased the software or downloaded a trial." Below this text are two input fields: "Username:" followed by a text box, and "Password:" followed by a text box. At the bottom of the window, there are three buttons: "Help" on the left, "Next >>" in the center, and "Cancel" on the right.

You should enter the Subscription Username and Password as supplied to you by Vicomsoft and then click the "Next" button. If you do not enter these details or click the "Cancel" button, setup cannot continue.

Users evaluating the software will have received these details in their Activation Code email.

Users who have purchased the software will have received these details in the License email message.

STEP 5

Select either a Router or Bridge setup

The next step is to decide whether you want to run InterGate PM as a bridge or as a router/firewall:



A Bridge setup will configure InterGate PM as a policy management device only, allowing it to be integrated into your existing network to give content filtering, application filtering, logging and reporting facilities where an existing firewall and/or router is in use. It is completely transparent and does not require you to change any network settings.

A Router / Firewall setup will configure InterGate PM as a firewall and router for all your machines on the network, in addition to providing content and application filtering, logging and reporting. You may have to change networking setup on your client computers, and possibly your servers, to operate in this mode.

STEP 6

Networking Setup

Auto Setup will ask some basic questions about your network configuration requirements. It may also be necessary to enter one or more unused IP addresses in order to create the configuration, although Auto Setup will suggest IP addresses to use. Auto Setup may not find the exact router you wish to use on your network (e.g. you may have several routers), therefore do ensure the default router suggested is correct.

The exact steps will depend on whether you are configuring as a firewall or as a bridge, but in both cases you will have to select an "Internet" and a "Local" network card. In firewall mode you can use the same card for both local and Internet access, but it is not recommended because of security concerns.

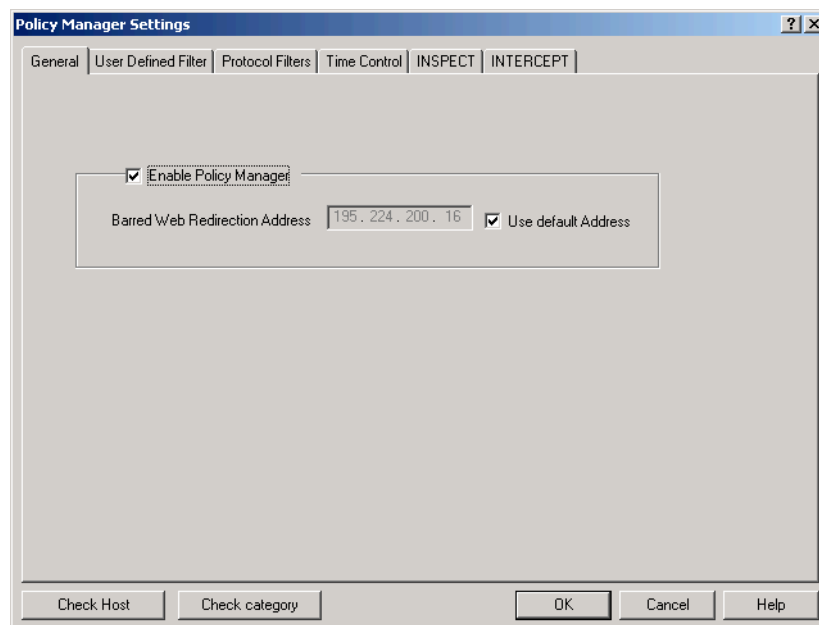
Please note that you can manually configure InterGate PM to have more than two network ports; this may be required if you have a large network or connectivity requirements not directly supported by Auto Setup. You can also change the settings of the ports at any time. Full details on this can be found in the Reference Guide.

STEP 7

Filtering Setup

Auto Setup will configure a default Internet Filtering policy (Guest user) for a typical installation and display it. This policy will apply to all computers connected to the network via InterGate PM, but not the InterGate PM machine itself.

If you wish to make adjustments to this policy you may do so before proceeding, but in most cases simply click the "OK" button to continue.



The INSPECT filter controls access to web sites which are deemed unacceptable, such as those with sexually explicit or drug related content. Content is categorized, as indicated by the checkboxes shown. Enabling a checkbox will block access to that category of site.

The INTERCEPT filter controls usage of Peer to Peer, Instant Messaging and Voice over IP applications, as indicated by the displayed checkboxes. Enabling a checkbox will block use of the selected application.

The User Defined Filters allow specific or wildcarded sites to be specifically allowed or prohibited, and act as a means to override the INSPECT filter.

The Protocol Filters allow specific protocols, such as FTP or News, to be blocked.

The Time Control filter allows usage of the Internet to be restricted to certain times of day, and a maximum allowed online time.

STEP 8

Setting up Logging and Reporting

To use the logging and reporting capability of InterGate PM, double click the "Intelligence.exe" and follow the on-screen instructions to install the Intelligence module.

To launch Intelligence, open the "Start" menu, "Programs", "Vicomsoft" and select "Intelligence".

For information on how to use Intelligence to produce reports, please see the Intelligence User Guide.

COMPLETE

Setup Complete

InterGate PM configuration is now complete. If you are using InterGate PM as a firewall, you should configure your client computers to access the Internet via InterGate PM in order to apply the content and application filtering policy that was configured.

The instructions to configure your client computers are dependent on the configuration that has been chosen during Auto Setup. Please follow the on-screen instructions for setting up client machines as displayed by InterGate PM that are appropriate for your installation.

